

Say It and Play It

No. 1

Three staves of musical notation in treble clef. The first staff contains a sequence of notes: C4, D4, E4, F4, G4, A4, B4, C5. The second staff contains a sequence of notes: C4, D4, E4, F4, G4, A4, B4, C5. The third staff contains a sequence of notes: C4, D4, E4, F4, G4, A4, B4, C5.

No. 2

Three staves of musical notation in bass clef. The first staff contains a sequence of notes: C3, D3, E3, F3, G3, A3, B3, C4. The second staff contains a sequence of notes: C3, D3, E3, F3, G3, A3, B3, C4. The third staff contains a sequence of notes: C3, D3, E3, F3, G3, A3, B3, C4.

No. 3

Three staves of musical notation in treble clef. The first staff contains a sequence of notes: C4, D4, E4, F4, G4, A4, B4, C5. The second staff contains a sequence of notes: C4, D4, E4, F4, G4, A4, B4, C5. The third staff contains a sequence of notes: C4, D4, E4, F4, G4, A4, B4, C5.

No. 4

Musical score for No. 4, bass clef. The score consists of five staves. The first staff begins with a bass clef and contains five measures of music. The second and third staves each contain five measures. The fourth and fifth staves each contain five measures, with the fifth staff ending with a double bar line.

No. 5

Musical score for No. 5, treble clef. The score consists of three staves. The first staff begins with a treble clef and contains five measures of music. The second and third staves each contain five measures, with the third staff ending with a double bar line.

No. 6

Musical score for No. 6, bass clef. The score consists of three staves. The first staff begins with a bass clef and contains five measures of music. The second and third staves each contain five measures, with the third staff ending with a double bar line.

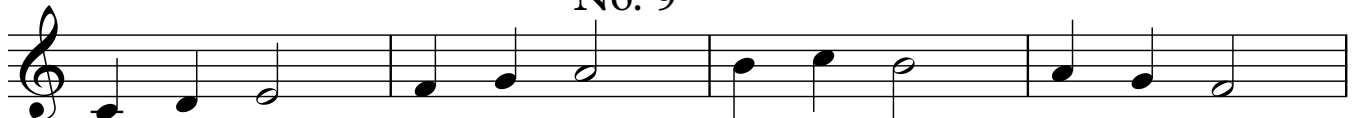
No. 7

Musical score for No. 7, treble clef. The score consists of two staves. The first staff begins with a treble clef and contains five measures of music. The second staff contains five measures, ending with a double bar line.

No. 8



No. 9



No. 10



No. 11



No. 12



No. 13

Three staves of music in treble clef. The first staff contains five measures of music: C4 quarter, D4 quarter, E4 quarter, F4 quarter, G4 quarter, A4 quarter, B4 quarter, C5 quarter, D5 quarter, E5 quarter, F5 quarter, G5 quarter, A5 quarter, B5 quarter, C6 quarter. The second staff contains five measures: C5 quarter, B5 quarter, A5 quarter, G5 quarter, F5 quarter, E5 quarter, D5 quarter, C5 quarter, B4 quarter, A4 quarter, G4 quarter, F4 quarter, E4 quarter, D4 quarter, C4 quarter. The third staff contains five measures: C4 quarter, D4 quarter, E4 quarter, F4 quarter, G4 quarter, A4 quarter, B4 quarter, C5 quarter, D5 quarter, E5 quarter, F5 quarter, G5 quarter, A5 quarter, B5 quarter, C6 quarter.

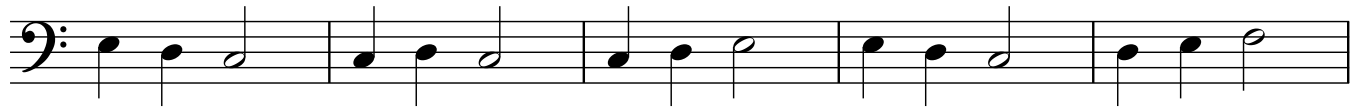
No. 14

Three staves of music in bass clef. The first staff contains five measures: C3 quarter, D3 quarter, E3 quarter, F3 quarter, G3 quarter, A3 quarter, B3 quarter, C4 quarter, D4 quarter, E4 quarter, F4 quarter, G4 quarter, A4 quarter, B4 quarter, C5 quarter. The second staff contains five measures: C5 quarter, B4 quarter, A4 quarter, G4 quarter, F4 quarter, E4 quarter, D4 quarter, C4 quarter, B3 quarter, A3 quarter, G3 quarter, F3 quarter, E3 quarter, D3 quarter, C3 quarter. The third staff contains five measures: C3 quarter, D3 quarter, E3 quarter, F3 quarter, G3 quarter, A3 quarter, B3 quarter, C4 quarter, D4 quarter, E4 quarter, F4 quarter, G4 quarter, A4 quarter, B4 quarter, C5 quarter.

No. 15

Five staves of music in treble clef. The first staff contains five measures: C4 quarter, D4 quarter, E4 quarter, F4 quarter, G4 quarter, A4 quarter, B4 quarter, C5 quarter, D5 quarter, E5 quarter, F5 quarter, G5 quarter, A5 quarter, B5 quarter, C6 quarter. The second staff contains five measures: C5 quarter, B5 quarter, A5 quarter, G5 quarter, F5 quarter, E5 quarter, D5 quarter, C5 quarter, B4 quarter, A4 quarter, G4 quarter, F4 quarter, E4 quarter, D4 quarter, C4 quarter. The third staff contains five measures: C4 quarter, D4 quarter, E4 quarter, F4 quarter, G4 quarter, A4 quarter, B4 quarter, C5 quarter, D5 quarter, E5 quarter, F5 quarter, G5 quarter, A5 quarter, B5 quarter, C6 quarter. The fourth staff contains five measures: C5 quarter, B5 quarter, A5 quarter, G5 quarter, F5 quarter, E5 quarter, D5 quarter, C5 quarter, B4 quarter, A4 quarter, G4 quarter, F4 quarter, E4 quarter, D4 quarter, C4 quarter. The fifth staff contains five measures: C4 quarter, D4 quarter, E4 quarter, F4 quarter, G4 quarter, A4 quarter, B4 quarter, C5 quarter, D5 quarter, E5 quarter, F5 quarter, G5 quarter, A5 quarter, B5 quarter, C6 quarter.

No. 16



No. 17



No. 18



No. 19



No. 20

