

Exercises for Four Fingers

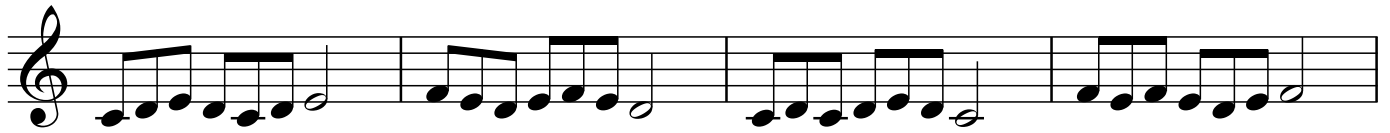
(Treble Clef)

No. 1

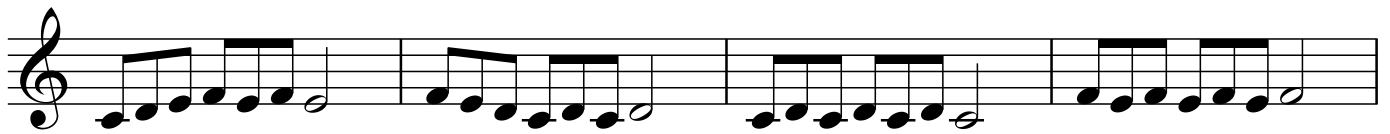
M. Kravchuk



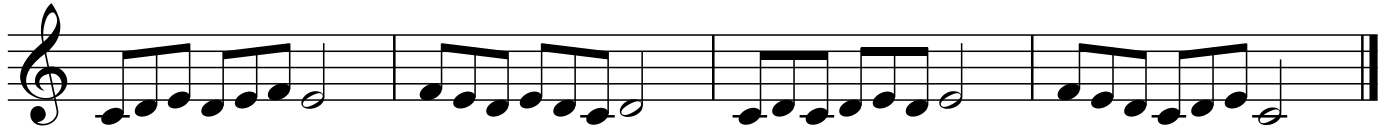
5



9



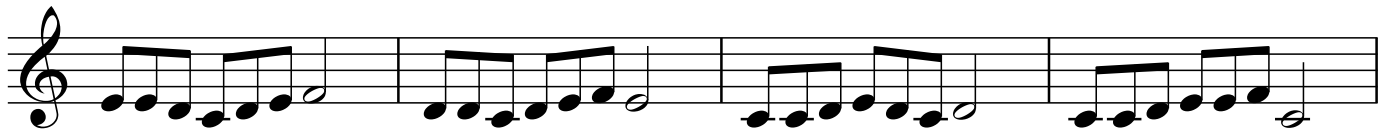
13



No. 2



5



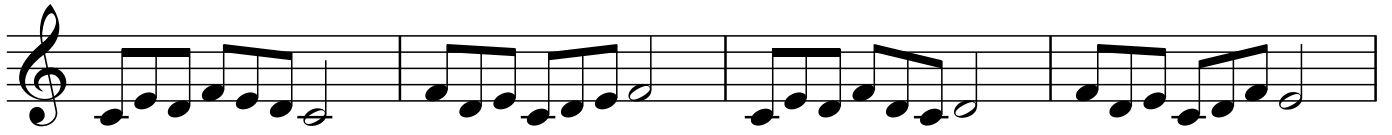
9



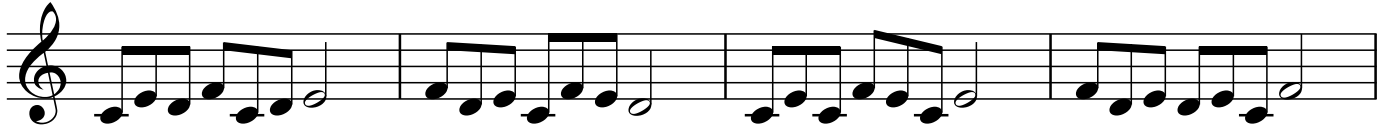
13



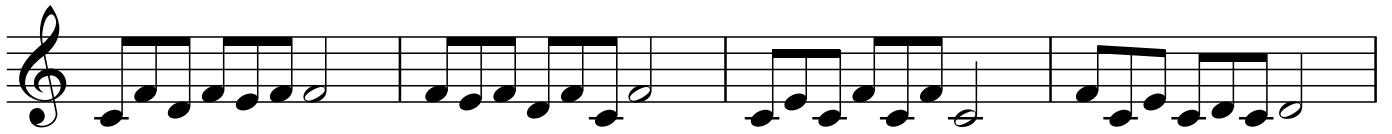
No. 3



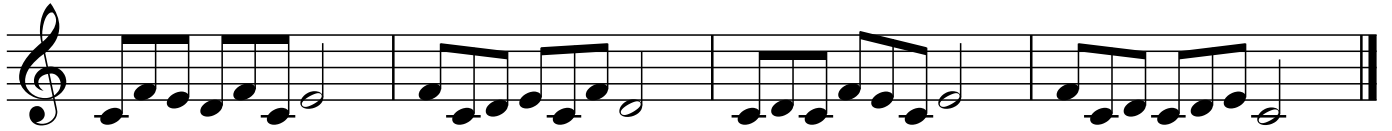
5



9



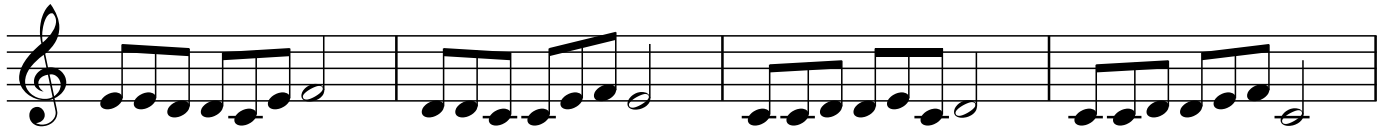
13



No. 4



5



9



13



No. 5

Musical score for No. 5, consisting of four staves of music. Each staff begins with a treble clef and a common time signature. The music is written in a single melodic line. The first staff starts at measure 1. The second staff is marked with a '5' at the beginning, indicating it starts at measure 5. The third staff is marked with a '9' at the beginning, indicating it starts at measure 9. The fourth staff is marked with a '13' at the beginning, indicating it starts at measure 13. The piece concludes with a double bar line at the end of the fourth staff.

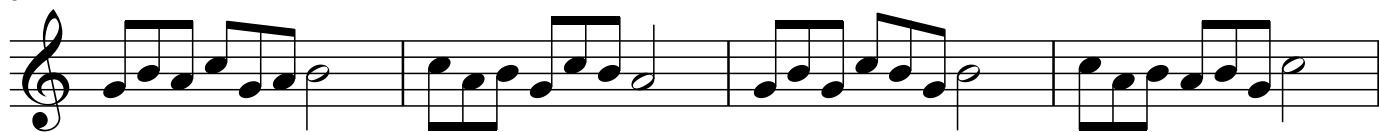
No. 6

Musical score for No. 6, consisting of four staves of music. Each staff begins with a treble clef and a common time signature. The music is written in a single melodic line. The first staff starts at measure 1. The second staff is marked with a '5' at the beginning, indicating it starts at measure 5. The third staff is marked with a '9' at the beginning, indicating it starts at measure 9. The fourth staff is marked with a '13' at the beginning, indicating it starts at measure 13. The piece concludes with a double bar line at the end of the fourth staff.

No. 7



5



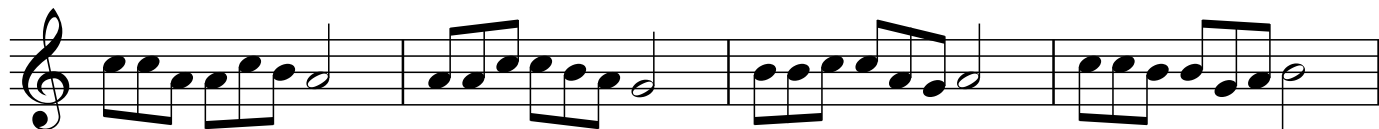
9



13



No. 8



5



9



13



(Bass Clef)

5

No. 1



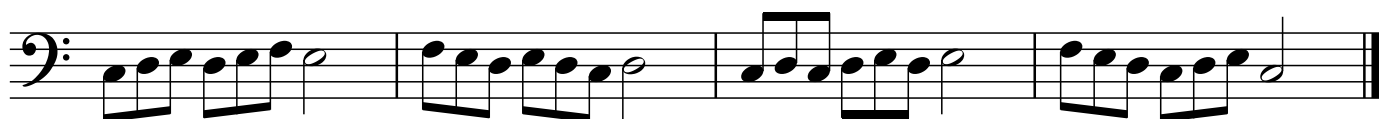
5



9



13



No. 2



5



9



13



No. 3



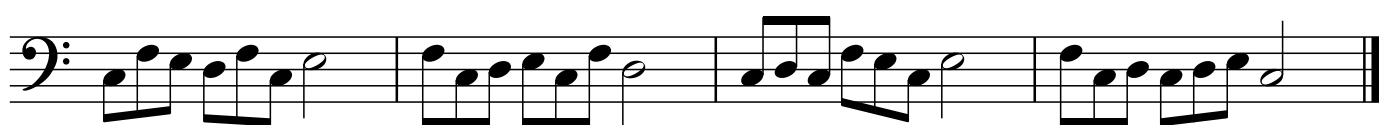
5



9



13



No. 4



5



9



13



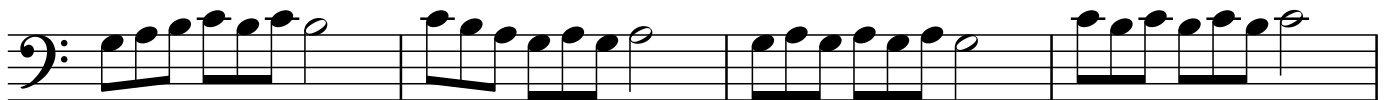
No. 5



5



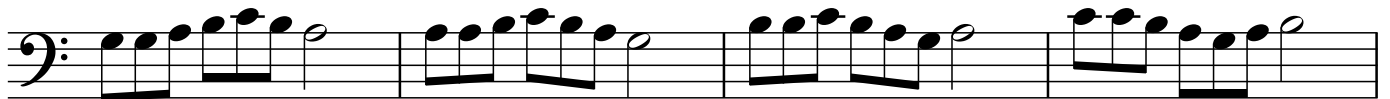
9



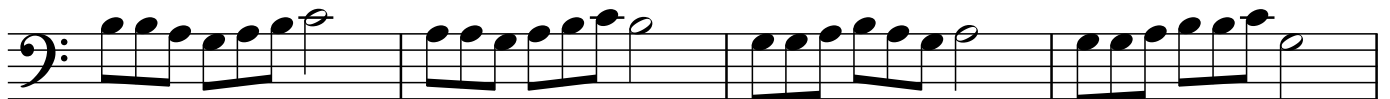
13



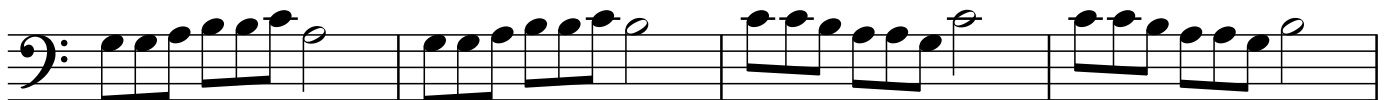
No. 6



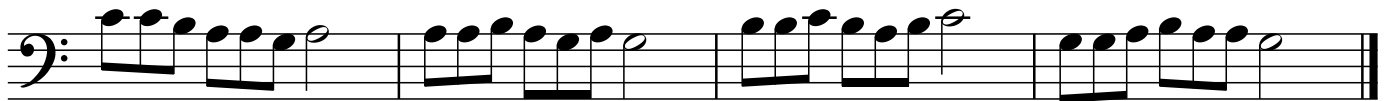
5



9



13



No. 7



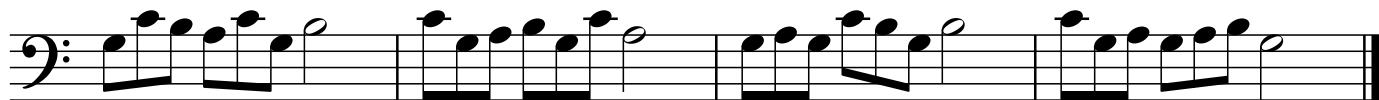
5



9



13



No. 8



5



9



13

