

Exercises for Three Fingers

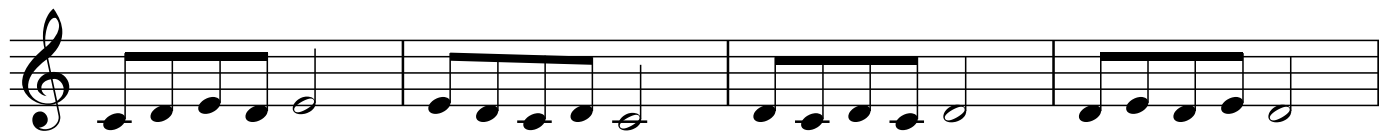
(Treble Clef)

No. 1

M. Kravchuk



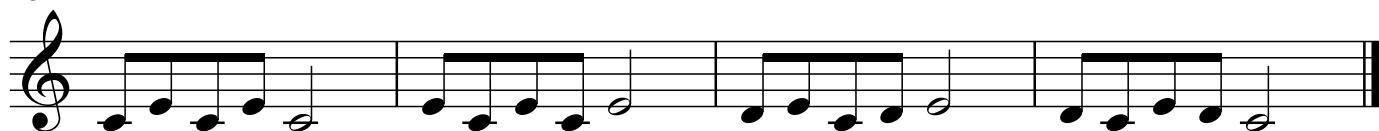
5



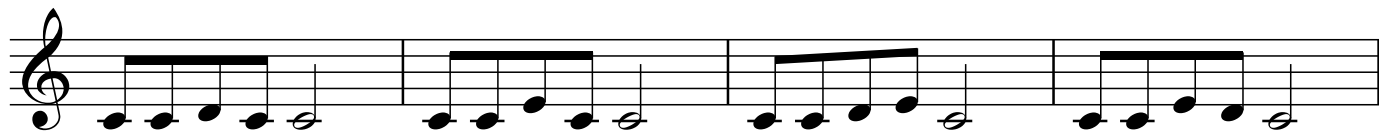
9



13



No. 2



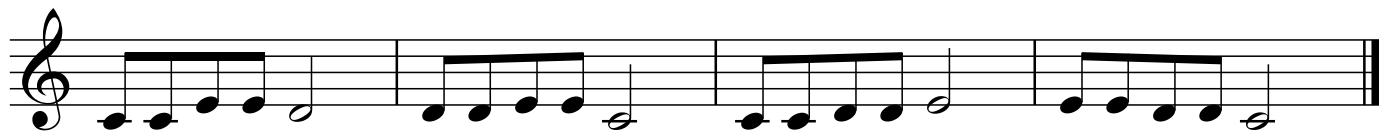
5



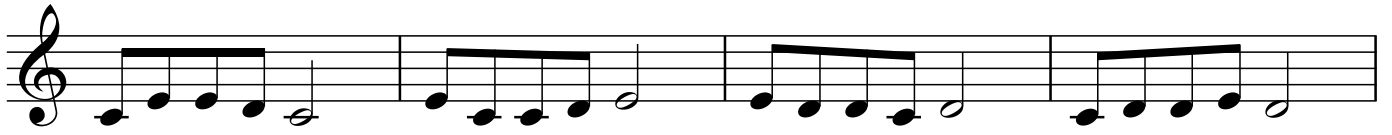
9



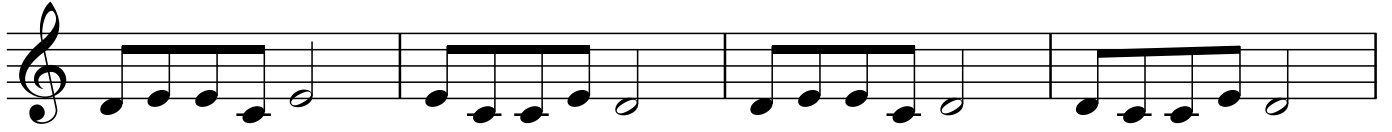
13



No. 3



5



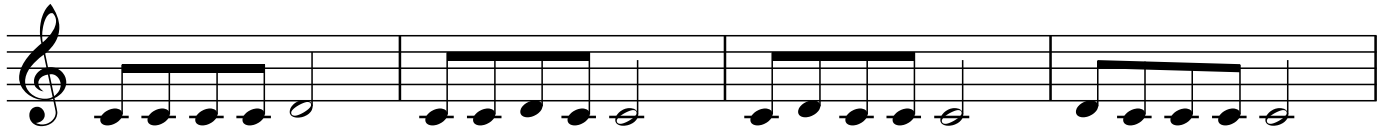
9



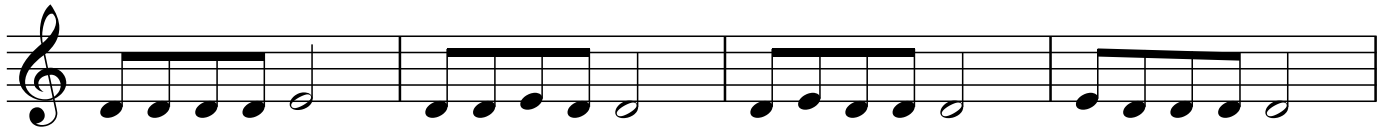
13



No. 4



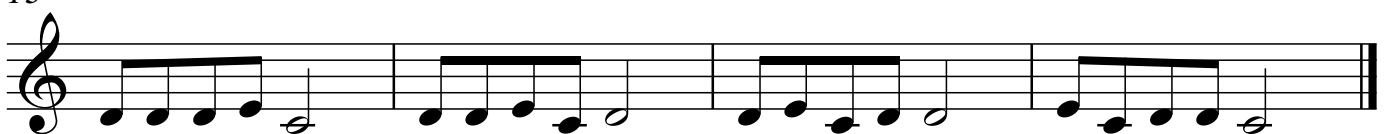
5



9



13



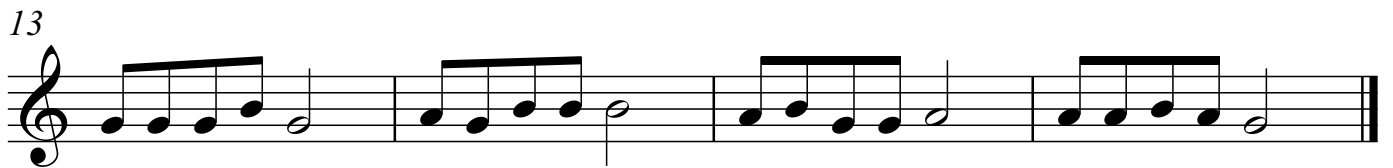
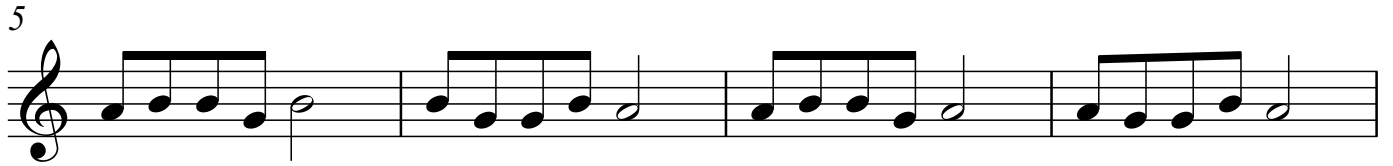
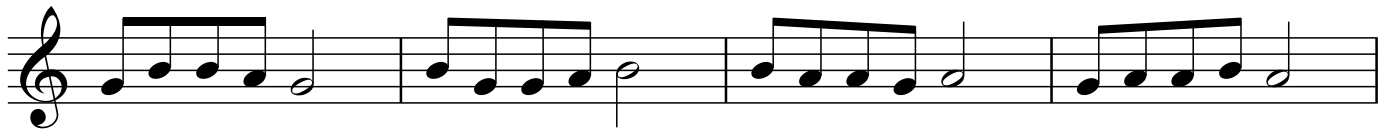
No. 5

Musical score for No. 5, consisting of four staves of music. Each staff begins with a treble clef and a common time signature. The music is written in a single melodic line. The first staff contains measures 1-4. The second staff is marked with a '5' at the beginning and contains measures 5-8. The third staff is marked with a '9' at the beginning and contains measures 9-12. The fourth staff is marked with a '13' at the beginning and contains measures 13-16, ending with a double bar line.

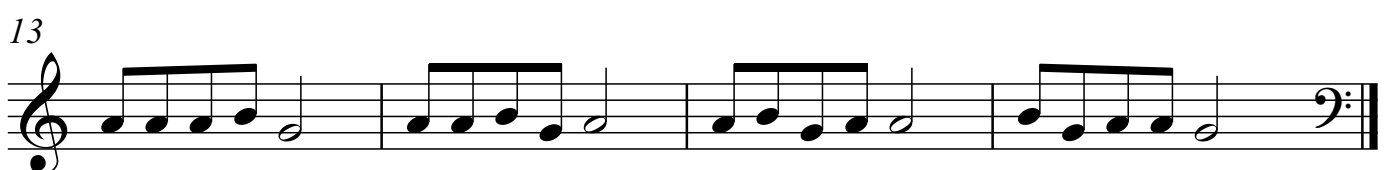
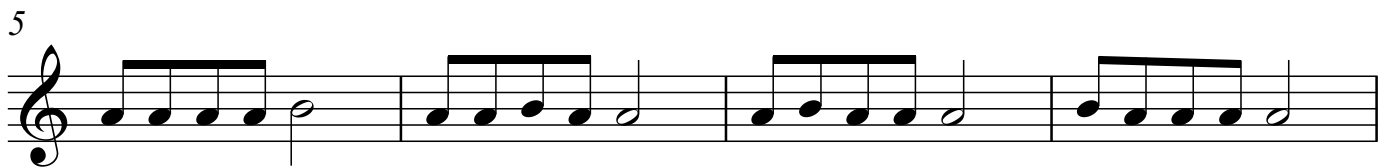
No. 6

Musical score for No. 6, consisting of four staves of music. Each staff begins with a treble clef and a common time signature. The music is written in a single melodic line. The first staff contains measures 1-4. The second staff is marked with a '5' at the beginning and contains measures 5-8. The third staff is marked with a '9' at the beginning and contains measures 9-12. The fourth staff is marked with a '13' at the beginning and contains measures 13-16, ending with a double bar line.

No. 7



No. 8



(Bass Clef)

No. 1

5

9

13

No. 2

5

9

13

No. 3

6

5

9

13

Musical score for No. 3, bass clef, 4 measures per line. The score consists of four lines of music, each starting with a measure number (6, 5, 9, 13) and ending with a double bar line. The notation includes eighth and sixteenth notes, and rests.

No. 4

5

9

13

Musical score for No. 4, bass clef, 4 measures per line. The score consists of four lines of music, each starting with a measure number (5, 9, 13) and ending with a double bar line. The notation includes eighth and sixteenth notes, and rests.

No. 5

5

9

13

Detailed description: This musical score for 'No. 5' is written in bass clef and consists of 16 measures. The notation is organized into four systems of four measures each. The first measure of each system begins with a finger number '5'. The melody is a simple eighth-note scale: G2, A2, B2, C3, D3, E3, F3, G3. The final measure of the fourth system concludes with a double bar line.

No. 6

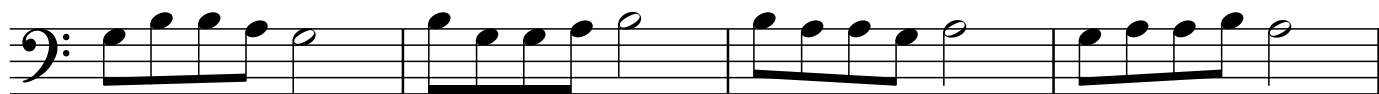
5

9

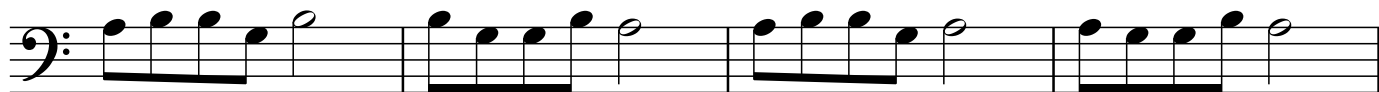
13

Detailed description: This musical score for 'No. 6' is written in bass clef and consists of 16 measures. The notation is organized into four systems of four measures each. The first measure of each system begins with a finger number '5'. The melody is a simple eighth-note scale: G2, A2, B2, C3, D3, E3, F3, G3. The final measure of the fourth system concludes with a double bar line.

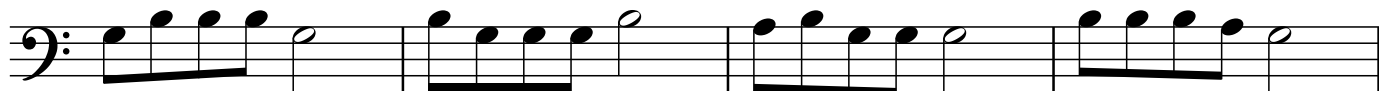
No. 7



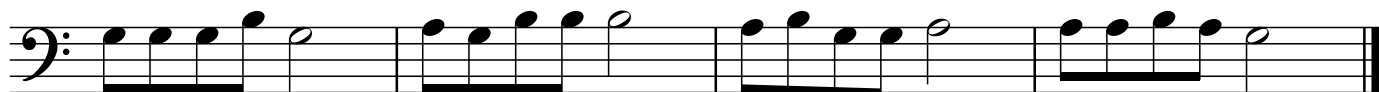
5



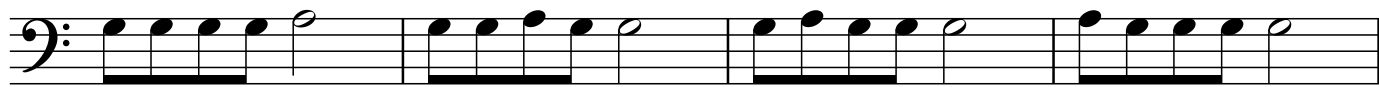
9



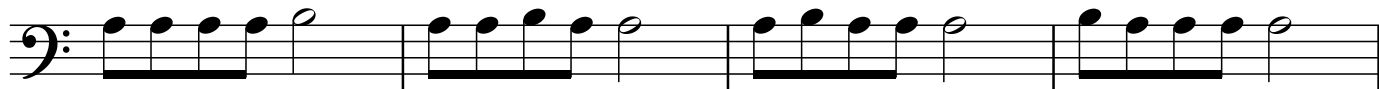
13



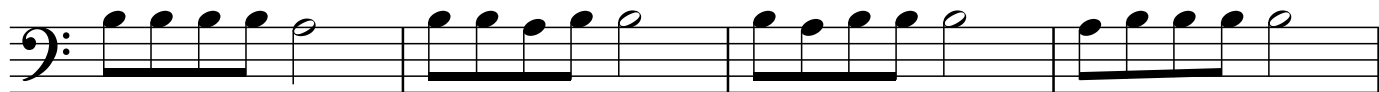
No. 8



5



9



13

