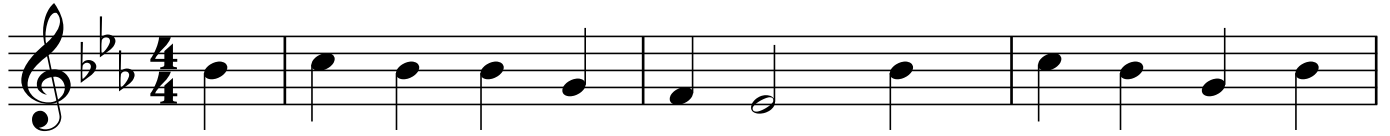


Cindy

E \flat



You ought to see my Cin - dy, She lives a - way down
The first time that I saw her, She was stand-in' in the
I wish I was an ap - ple, A - hang-in' on a

B \flat 7

E \flat

A \flat



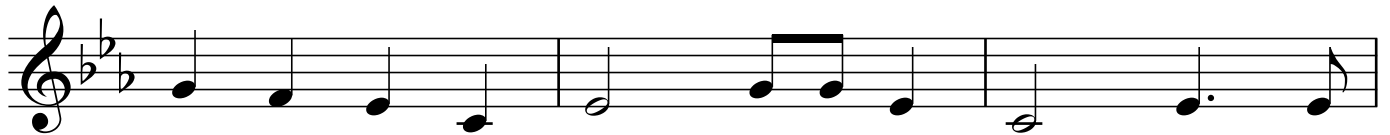
South, And she's so sweet the hon - ey bees, All
door, Her shoes and stock-ings in her hand, Her
tree, And ev - 'ry time my Cin - dy passed, She'd

E \flat

A \flat

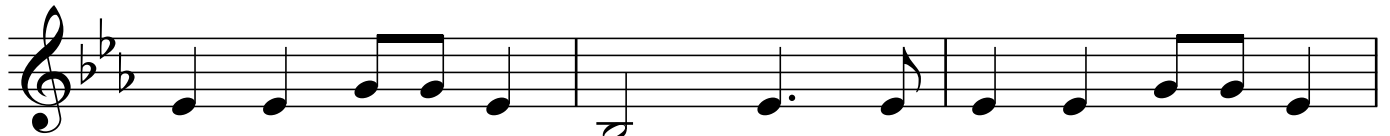
E \flat

A \flat



swarm a - round her mouth. Get a long home, Cind - dy,
feet all over the floor.
take a bite of me.

E \flat



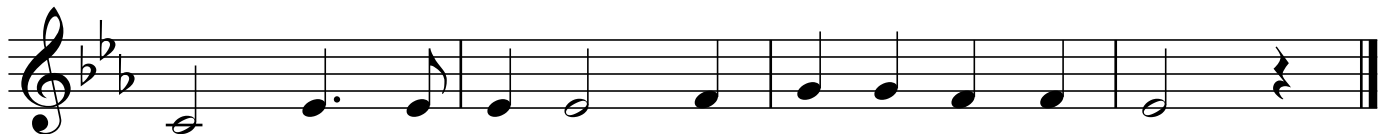
Cin - dy, Get a-long home, Cin - dy, Cin - dy, Get a-long

A \flat

E \flat

B \flat 7

E \flat



home, Cin - dy, Cin - dy, I'll mar - ry you some - day.