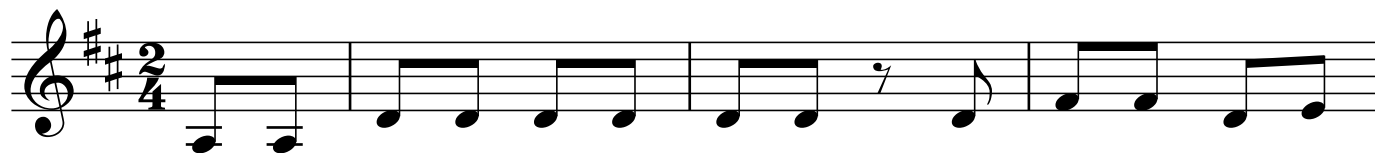


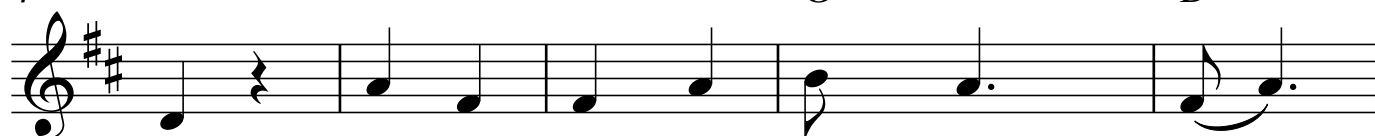
Mister Rabbit

D



"Mis - ter Rab - bit, Mis - ter Rab - bit, your ears are might - y
"Mis - ter Rab - bit, Mis - ter Rab - bit, your coat's might - y
"Mis - ter Rab - bit, Mis - ter Rab - bit, your nose_ al - ways
"Mis - ter Rab - bit, Mis - ter Rab - bit, your tail's_ might - y

4



long." "Yes, in - deed, they're put on wrong."
gray." "Yes, in - deed, 'twas made that way."
twitches." "Yes, in - deed, be - cause it it - ches."
white." "Yes, in - deed, I'm hop - pin' out of sight."

9



Ev - 'ry lit - tle soul must shine, shine, shine, -

13



Ev - 'ry lit - tle soul must shine, - shine, shine.