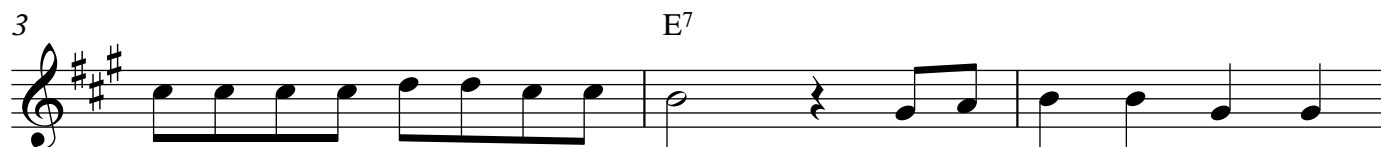


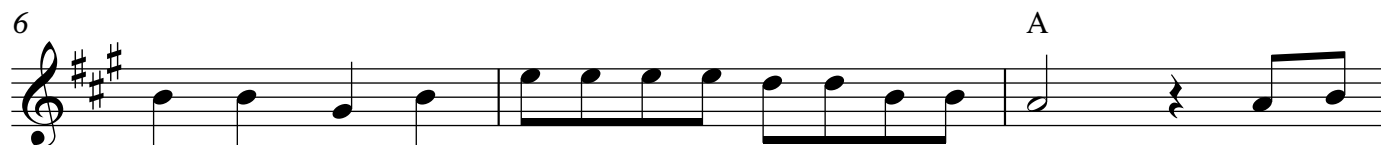
Polly Wolly Doodle



A
Oh, I went down South for to see my Sal, Sing
Oh, my Sal, she is a maid - en fair,
Oh, a grass - hopper sittin' on a rail - road track,
Oh, I went to bed but it wasn't any use,
Be - hind the barn, down on my knees,
He sneezed so hard with the whoop - ing cough,



3 E7
Pol - ly wol - ly doo - dle all the day, My Sal, she is a
With cur - ly eyes and
A - pickin' his teeth with a
My feet stuck out like a
I thought I heard a
He sneezed his head and



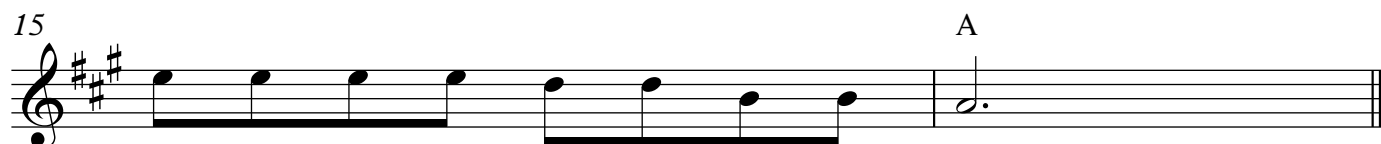
6 A
spunk - y gal, Sing Pol - ly wol - ly doo - dle all the day. Fare thee
laugh - ing hair,
car - pet tack,
chick - en roost,
chick - en sneeze,
tail right off,



9 E7
well, fare thee well, Fare thee well my fair - y fay, For I'm



13
goin' to Lou' - si - an - a for to see my Su - sy - an - na, Sing



15 A
Pol - ly wol - ly doo - dle all the day.