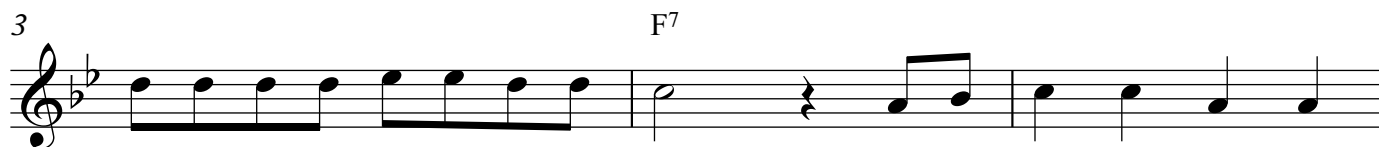


Polly Wolly Doodle

B \flat



Oh, I went down South for to see my Sal, Sing
 Oh, my Sal, she is a maid - en fair,
 Oh, a grass - hopper sittin' on a rail - road track,
 Oh, I went to bed but it wasn't any use,
 Be - hind the barn, down on my knees,
 He sneezed so hard with the whoop - ing cough,



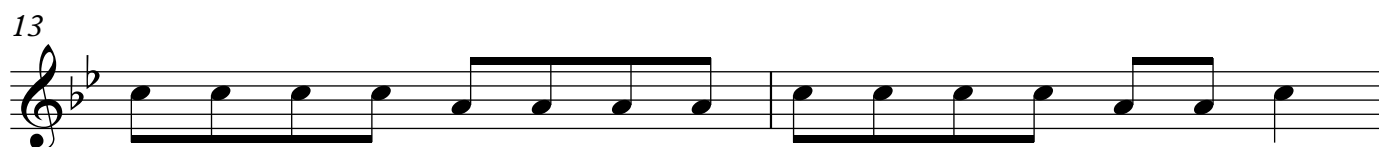
Pol - ly wol - ly doo - dle all the day, My Sal, she is a
 With cur - ly eyes and
 A - pickin' his teeth with a
 My feet stuck out like a
 I thought I heard a
 He sneezed his head and



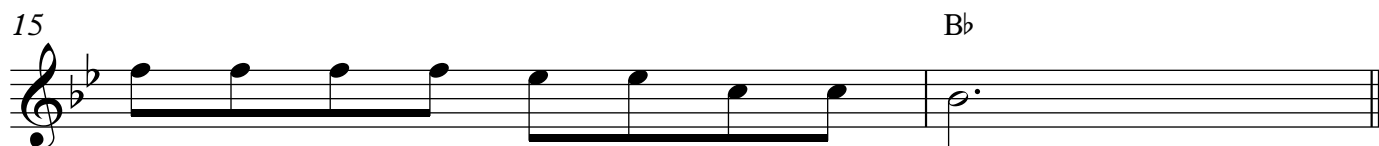
spunk - y gal, Sing Pol - ly wol - ly doo - dle all the day. Fare thee
 laugh - ing hair,
 car - pet tack,
 chick - en roost,
 chick - en sneeze,
 tail right off,



well, fare thee well, Fare thee well my fair - y fay, For I'm



goin' to Lou' - si - an - a for to see my Su - sy - an - na, Sing



Pol - ly wol - ly doo - dle all the day.