

# Polly Wolly Doodle

C



Oh, I went down South for to see my Sal, Sing  
Oh, my Sal, she is a maid - en fair,  
Oh, a grass - hopper sittin' on a rail - road track,  
Oh, I went to bed but it wasn't any use,  
Be - hind the barn, down on my knees,  
He sneezed so hard with the whoop - ing cough,

3

G<sup>7</sup>



Pol - ly wol - ly doo - dle all the day, My Sal, she is a  
With cur - ly eyes and  
A - pickin' his teeth with a  
My feet stuck out like a  
I thought I heard a  
He sneezed his head and

6

C



spunk - y gal, Sing Pol - ly wol - ly doo - dle all the day. Fare thee  
laugh - ing hair,  
car - pet tack,  
chick - en roost,  
chick - en sneeze,  
tail right off,

9

G<sup>7</sup>



well, fare thee well, Fare thee well my fair - y fay, For I'm

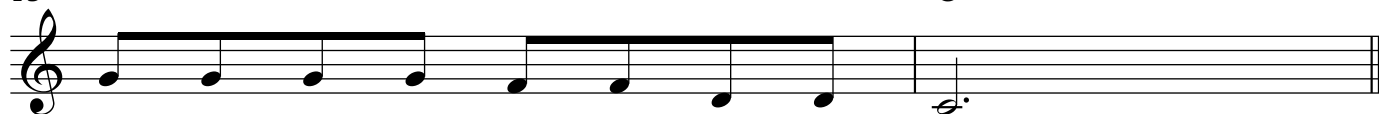
13



goin' to Lou' - si - an - a for to see my Su - sy - an - na, Sing

15

C



Pol - ly wol - ly doo - dle all the day.