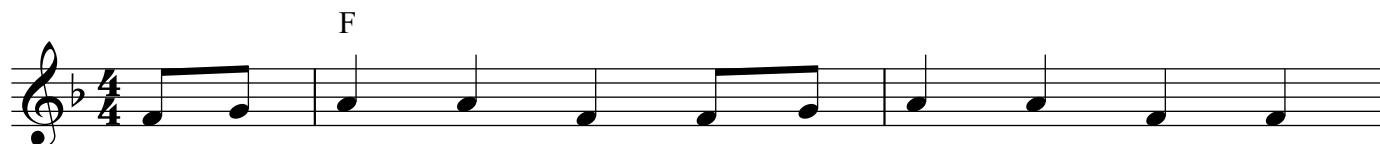
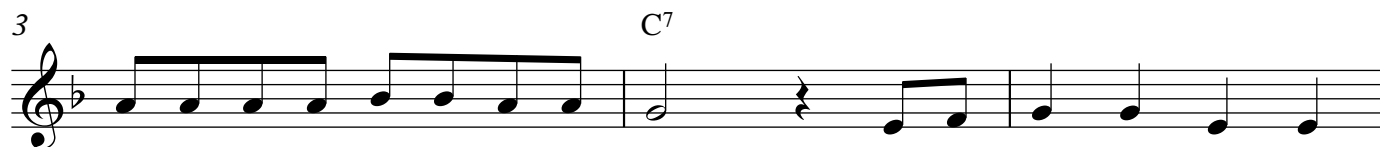


# Polly Wolly Doodle



Oh, I went down South for to see my Sal, Sing  
 Oh, my Sal, she is a maid - en fair,  
 Oh, a grass - hopper sittin' on a rail - road track,  
 Oh, I went to bed but it wasn't any use,  
 Be - hind the barn, down on my knees,  
 He sneezed so hard with the whoop - ing cough,



Pol - ly wol - ly doo - dle all the day, My Sal, she is a  
 With cur - ly eyes and  
 A - pickin' his teeth with a  
 My feet stuck out like a  
 I thought I heard a  
 He sneezed his head and



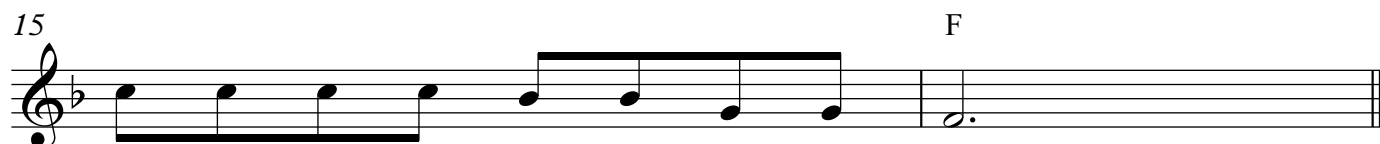
spunk - y gal, Sing Pol - ly wol - ly doo - dle all the day. Fare thee  
 laugh - ing hair,  
 car - pet tack,  
 chick - en roost,  
 chick - en sneeze,  
 tail right off,



well, fare thee well, Fare thee well my fair - y fay, For I'm



goin' to Lou' - si - an - a for to see my Su - sy - an - na, Sing



Pol - ly wol - ly doo - dle all the day.