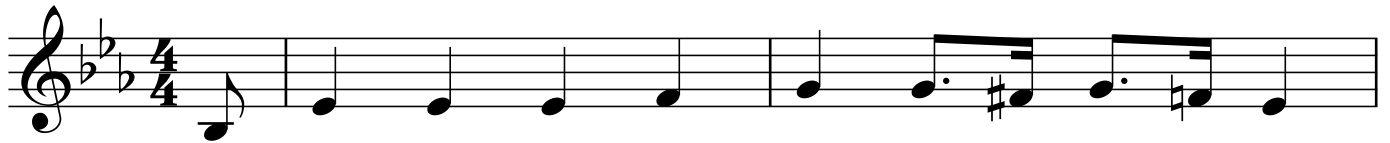


The Old Gray Mare

E \flat



The old gray mare, she ain't what she used to be,
The old gray mare, she kicked on the whif - fle - tree,

3

B \flat 7

E \flat



Ain't what she used to be, ain't what she used to be, The
kicked on the whif - fle - tree, kicked on the whif - fle - tree, The

5



old gray mare, she ain't what she used to be,
old gray mare, she kicked on the whif - fle - tree,

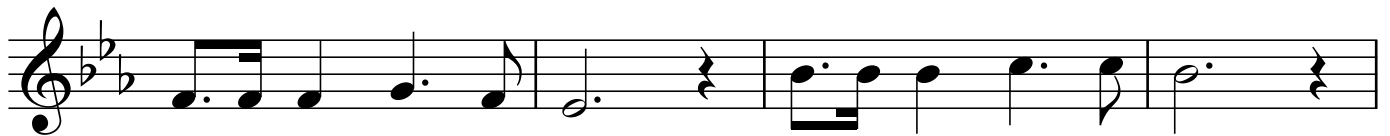
7

B \flat 7

E \flat

A \flat

E \flat

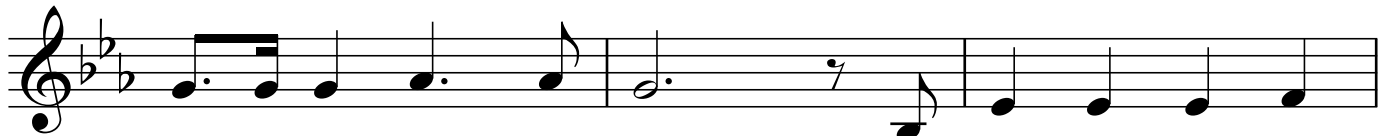


Man - y long years a - go. Man - y long years a - go,
Man - y long years a - go. Man - y long years a - go.

11

A \flat

E \flat



Man - y long years a - go. The old gray mare, she
Man - y long years a - go. The old gray mare, she

14

B \flat 7

E \flat



ain't what she used to be, Man - y long years a - go.
kicked on the whif - fle - tree, Man - y long years a - go.